







Model: **APTEK AR1200**

# AC1200

Dual Band Wi-Fi Router

-  Up to 867Mbps + 300Mbps Wi-Fi Speed
-  Powerful Dual-Core Processor
-  VPN Server and VPN Client Support
-  Enhanced Whole Home Coverage



[Datasheet](#)

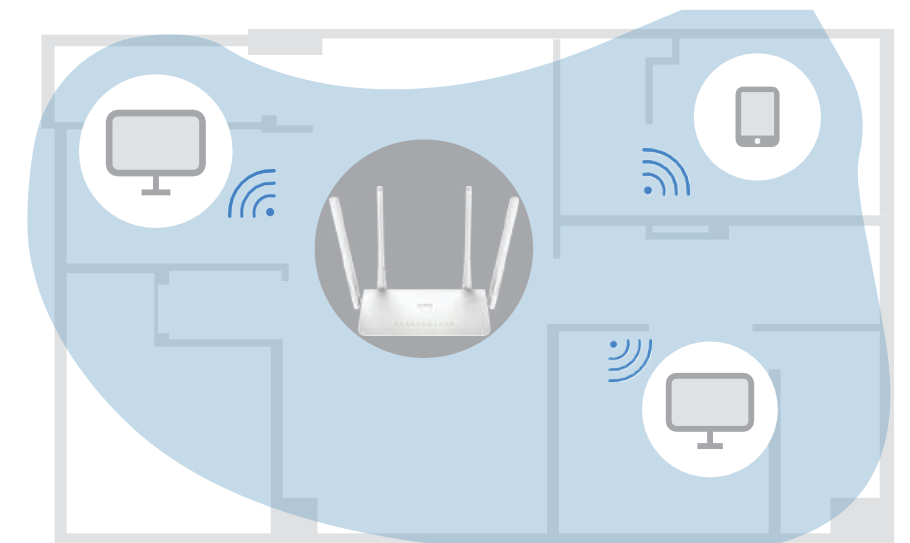


867 Mbps ( 5 GHz )

300 Mbps ( 2.4 GHz )

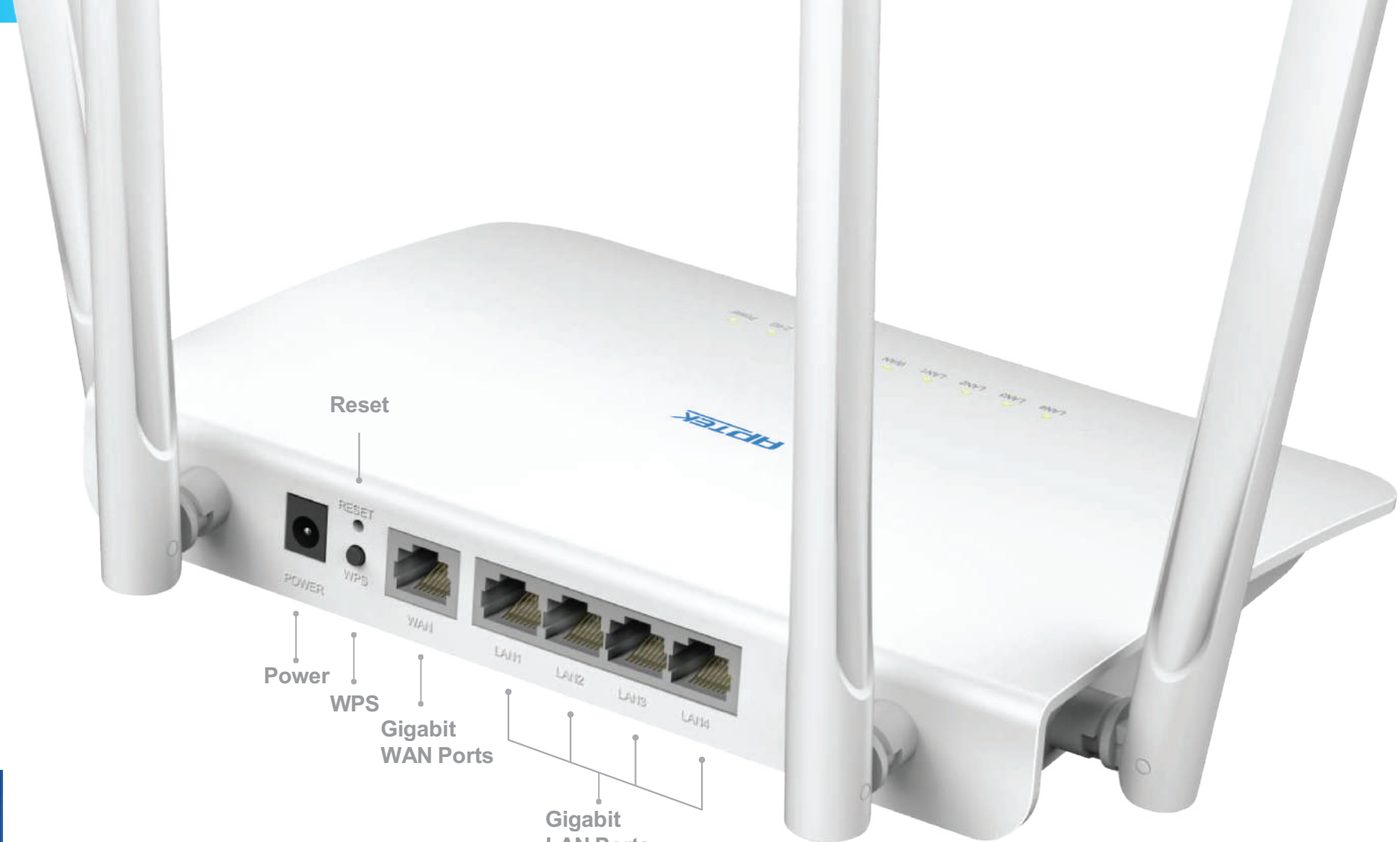
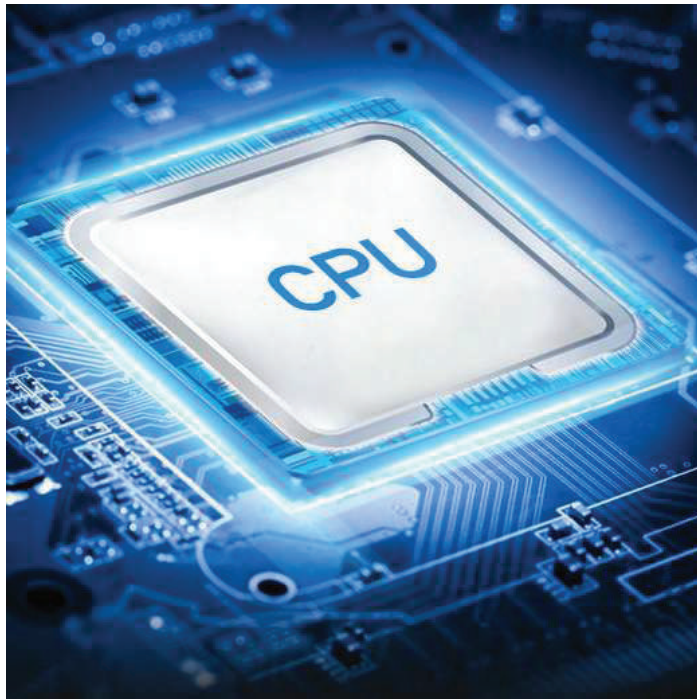
Up to 1.2 Gbps Wi-Fi Speed:  
Enjoy smooth streaming,  
downloading, and gaming  
with extremely fast Wi-Fi  
Speed.

## Extensive Coverage





# Hardware



16MB Flash + 128MB DDR

## Powerful Dual-Core Processor

Powerful Dual-Core CPU ensures smooth 4K UHD streaming to Smart TVs, mobile devices and gaming consoles without buffering.

## 16MB Flash + 128MB DDR

Large capacity flash/DDR design makes the router stable and reliable, ensuring the continuous operation of the system, and provides more space for the file system.

## 4 x 5dBi High Gain Antennas

High gain antennas boost sensitivity of the router, create connections over greater distances, providing powerful penetration through walls.

## 5 x Gigabit Ports

Featured with 5 10/100/1000Mbps ports, greatly expands your network capacity, enabling instant large files transferring.

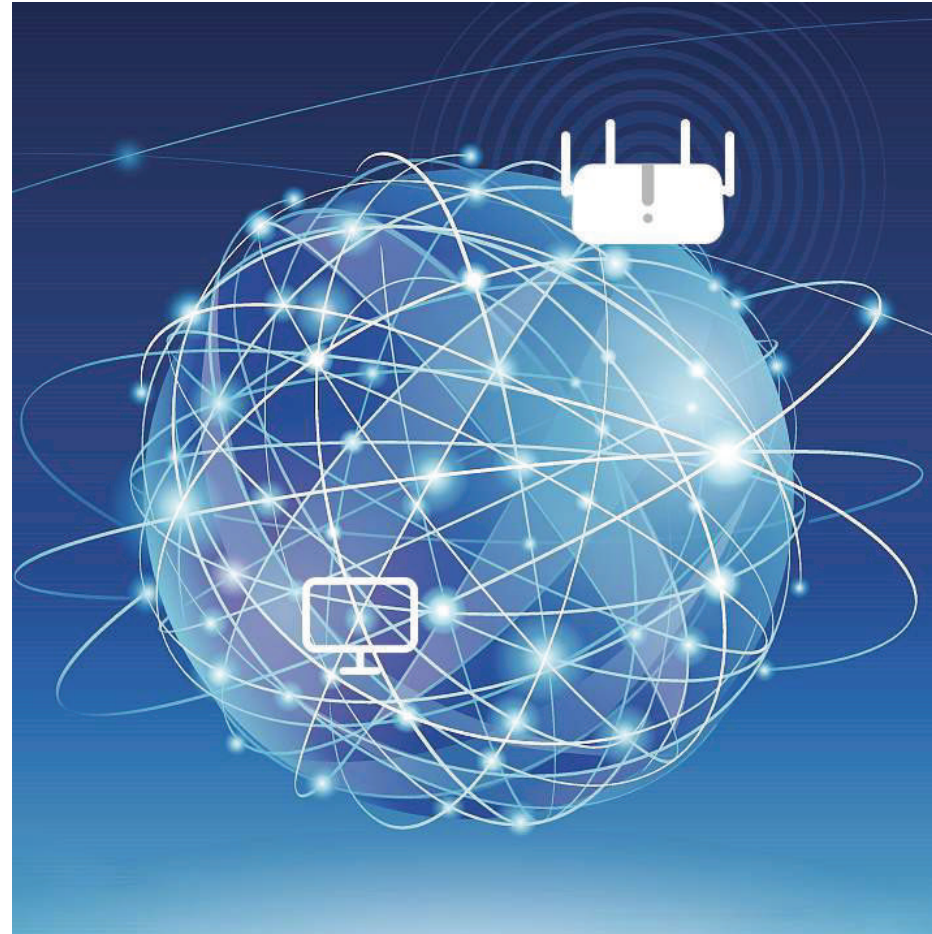


## Software



### VPN

With built-in VPN, this router can easily establish a connection to VPN Server to transport all your online data and traffic, securing it with its encryption at the same time.



### DDNS

By assigning a custom domain name to your home router's IP address, DDNS function will update automatically as your home IP continues to change. Compatible with 15 more DDNS providers.



### Guest Network

Guest Network separate guest access from your family network. Maintain high security across your network to help ensure your privacy is safe while online.



## Specifications

- Up to 1.2 Gbps Wi-Fi Speed: Enjoy smooth streaming, downloading, and gaming with extremely fast Wi-Fi Speed.
- Powerful Dual-Core Processor: Powerful Dual-Core CPU ensures smooth 4K UHD streaming to Smart TVs, mobile devices and gaming consoles without buffering.
- Improved Capacity: Large flash/DDR design to improve capacity and efficiency of your network, so more devices can connect without slowing down your Wi-Fi.
- Extensive Coverage: Beamforming and four antennas combine to deliver focused reception to devices far away.
- Pre-installed VPN: With built-in VPN clients, this router can easily establish a connection to VPN Server to transport all your online data and traffic, securing it with its encryption at the same time.
- Dynamic DNS: DDNS function solves the issue of changing residential IP addresses. By assigning a custom domain name to your home router's IP address, DDNS function will update automatically as your home IP continues to change. Compatible with 15 more DDNS providers.

## Hardware Features

Processor	Dual-Core CPU
Flash	128Mbit (16MB)
DDR	1Gbit (128MB)
Antenna	4 × Fixed Omni-Directional Antennas
Interface	1 × 10/100/1000 Mbps WAN Port 4 × 10/100/1000 Mbps LAN Ports
Button	WPS Button, Reset Button
External Power Supply	12 V / 1 A
Dimensions ( W x D x H )	204.8 x 137. 5 x 38. 3mm

## Wireless Features

Wireless Standards	IEEE 802.11ac/n/a 5 GHz IEEE 802.11n/b/g 2.4 GHz
Frequency	5 GHz, 2.4 GHz
Signal Rate	867Mbps (5GHz Wave 2 MU-MIMO), 300Mbps (2.4GHz) Compatible with 802.11a/b/g/n/ac Wi-Fi standards
Wireless Modes	Enable/Disable Wireless Radio, WMM
Wireless Security	WEP, WPAWPA2, WPA-PSK/WPA2-PSK



## Software Features

WAN Type	Dynamic IP/Static IP/PPPoE
DHCP	Server, DHCP Client List, Address Reservation
Dynamic DNS	Compatible with 15 more DDNS providers.
Guest Network	2.4 GHz guest network × 1 5 GHz guest network × 1
NAT	Port Forwarding, Port Triggering, UPnP, DMZ
VPN Sever & Client	PPTP/L2TP/OpenVPN/WireGuard/IPSec/Zerotier
Working Mode	Wi-Fi Router/ Wireless Access Point/Wi-Fi Extender/ WISP
CWMP Protocol	TR069 / TR098 / TR111 / TR181
ACS Server Compatibility	GenieACS, OpenACS
Management	Access Control, Local Management, Remote Management, Wake on LAN
TTL	Extend/Spoof/Custom
DNS	Cloudflare/Google/NextDNS/Custom
VLAN	Tag VLAN / IPTV
Internet Protocols	IPv4 / IPv6
IPv6	Relay Dynamic (SLAAC/DHCPv6) Static (Fixed IP) Passthrough MAP-E (Dual-stack) DS-Lite (Dual-stack)

## Others

Package	AC1200 Wi-Fi Router
Contents	Power Adapter RJ45 Ethernet Cable Quick Installation Guide
System Requirements	Microsoft Windows 98SE/NT/2000/XP/Vista™/7/8/8.1/10/11, MAC OS, NetWare, UNIX or Linux <u>Internet Explorer 11, Firefox 12.0, Chrome 20.0, Safari 4.0, or other</u> Java-enabled browser Cable or DSL Modem Subscription with an internet service provider (for internet access)

## Operating Environment

Operating Temperature	0°C~40°C
Storage Temperature	-40°C~60°C
Operating Humidity	10%~90% non-condensing
Storage Humidity	5%~90% non-condensing